

MODULAR FITTING ROOMS

WALLS + FORMS | RETAIL DISPLAY SOLUTIONS





# W A L L S + F O R M S

---

## **SIMPLE**

There are no complicated parts to worry about. Our system eliminates assembly errors, mis-ordering and high inventory costs. Each display consists of minimal components. Panels, panel fastening trims and accessory options come completely from one source, Walls+Forms. Panels snap together in minutes and full merchandising can be accomplished in a few hours.

## **AFFORDABLE**

Part standardization permits low prices with low minimum quantity. High construction costs, mess and lengthy time delays are eliminated.

## **UPGRADEABLE**

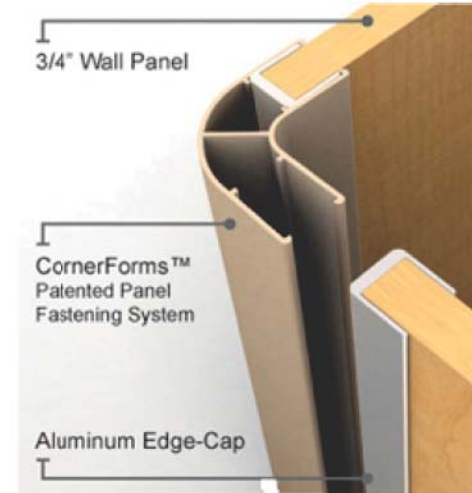
Each display system has been designed with the future in mind, need to upgrade your store? no problem, with Walls+Forms you will save thousands of dollars, start the right way by utilizing our systems from the beginning and never spend money on starting from scratch, with a very low budget you can create a whole new look in a matter of hours!



# CORNERFORM

## FEATURES:

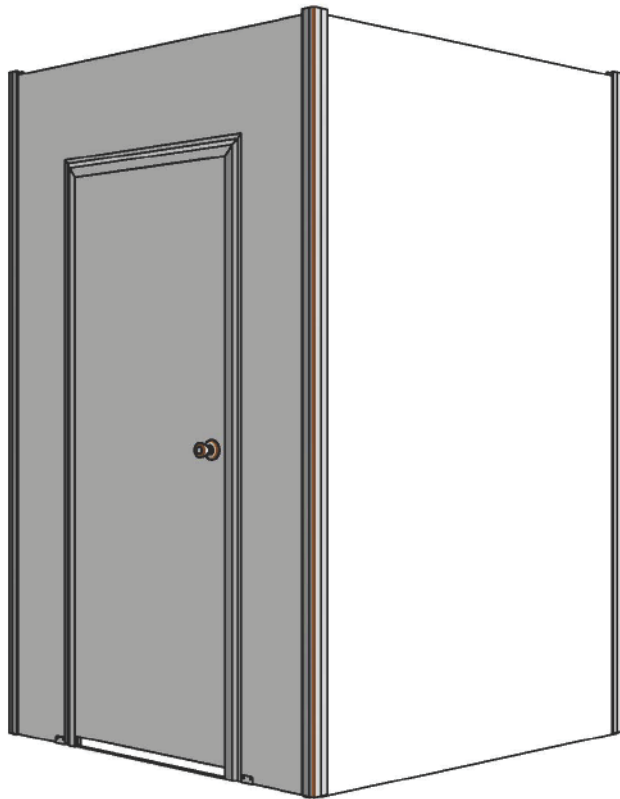
- Set against the wall or free-standing
- Can be set-up individually or in a series
- Flexibility to reconfigure and expand as needed
- Set up in minutes, no tools needed for assembly
- Quick and easy snap-on installation
- Flexibility to relocate to other sites



## STANDARD COLORS AVAILABLE:

- Gray panels with satin door moldings and lock
- Hard rock maple with satin door moldings and lock





## 5'x5' FITTING ROOM

4 PANELS - STARTER

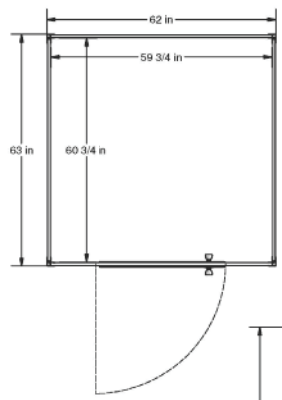
### STANDARD COLORS AVAILABLE:

- Gray panels with satin door moldings and lock
- Hard rock maple with satin door moldings and lock

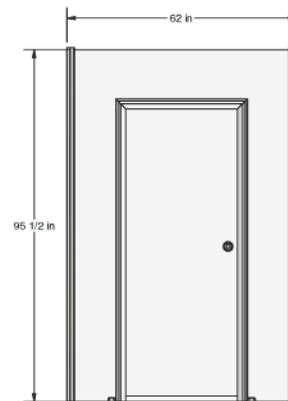
### ACCESSORIES AVAILABLE:

- Corner Bench
- Shelf w/hooks

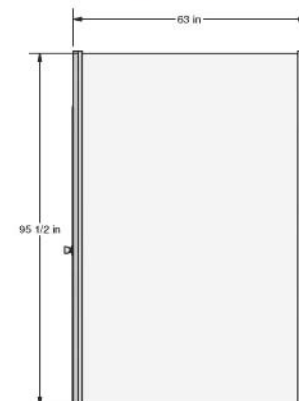
TOP VIEW

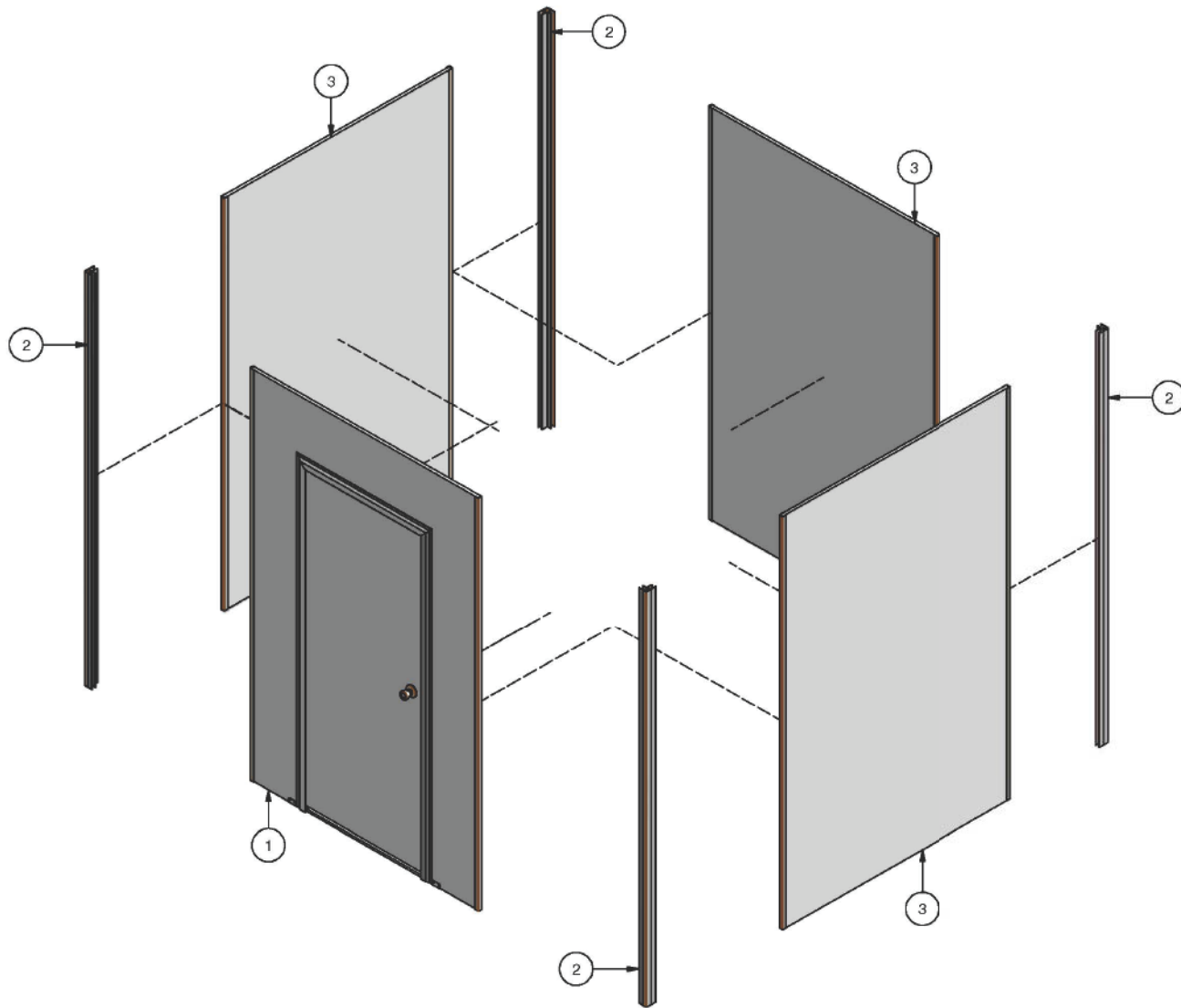


FRONT VIEW

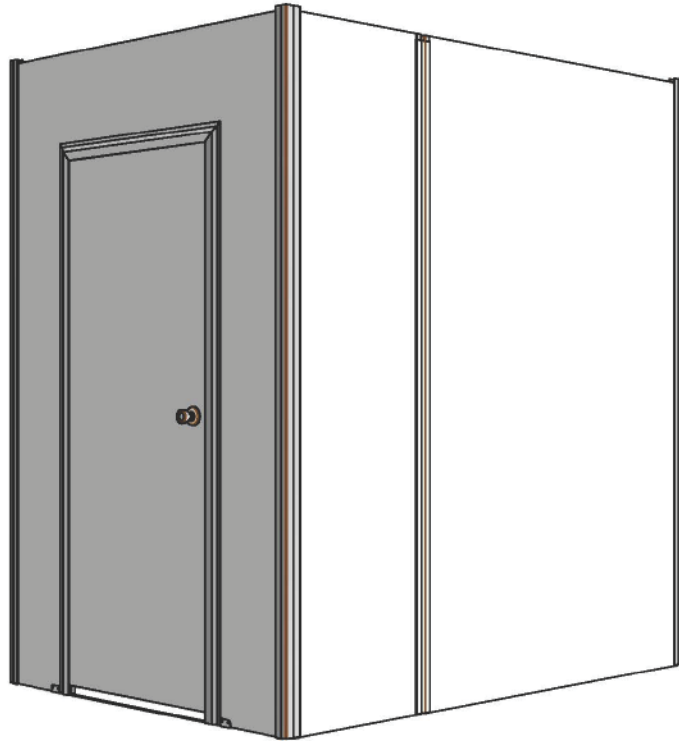


SIDE VIEW





ITEM	QTY	PART NUMBER	DESCRIPTION
1	1	Door Panel 60"	Single Door H 96"xW60"x D 0.75"
2	4	2005	CornerForm, 3/4 in, Sharp 90, 8 ft.
3	3	Solis Panel 5'	60"W x 95-1/2" H



# 5'x7' FITTING ROOM

6 PANELS - STARTER (ADA)

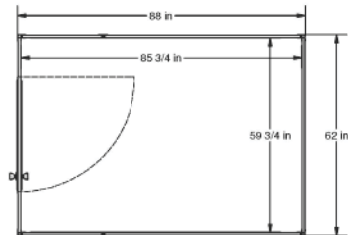
## STANDARD COLORS AVAILABLE:

- Gray panels with satin door moldings and lock
- Hard rock maple with satin door moldings and lock

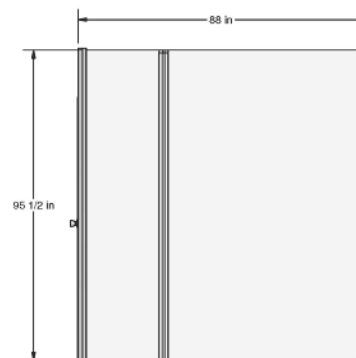
## ACCESSORIES AVAILABLE:

- ADA Bench
- Shelf w/hooks

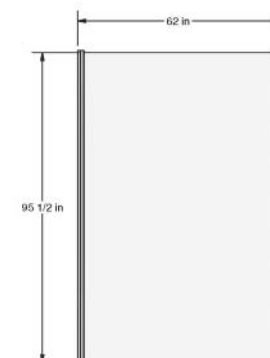
TOP VIEW

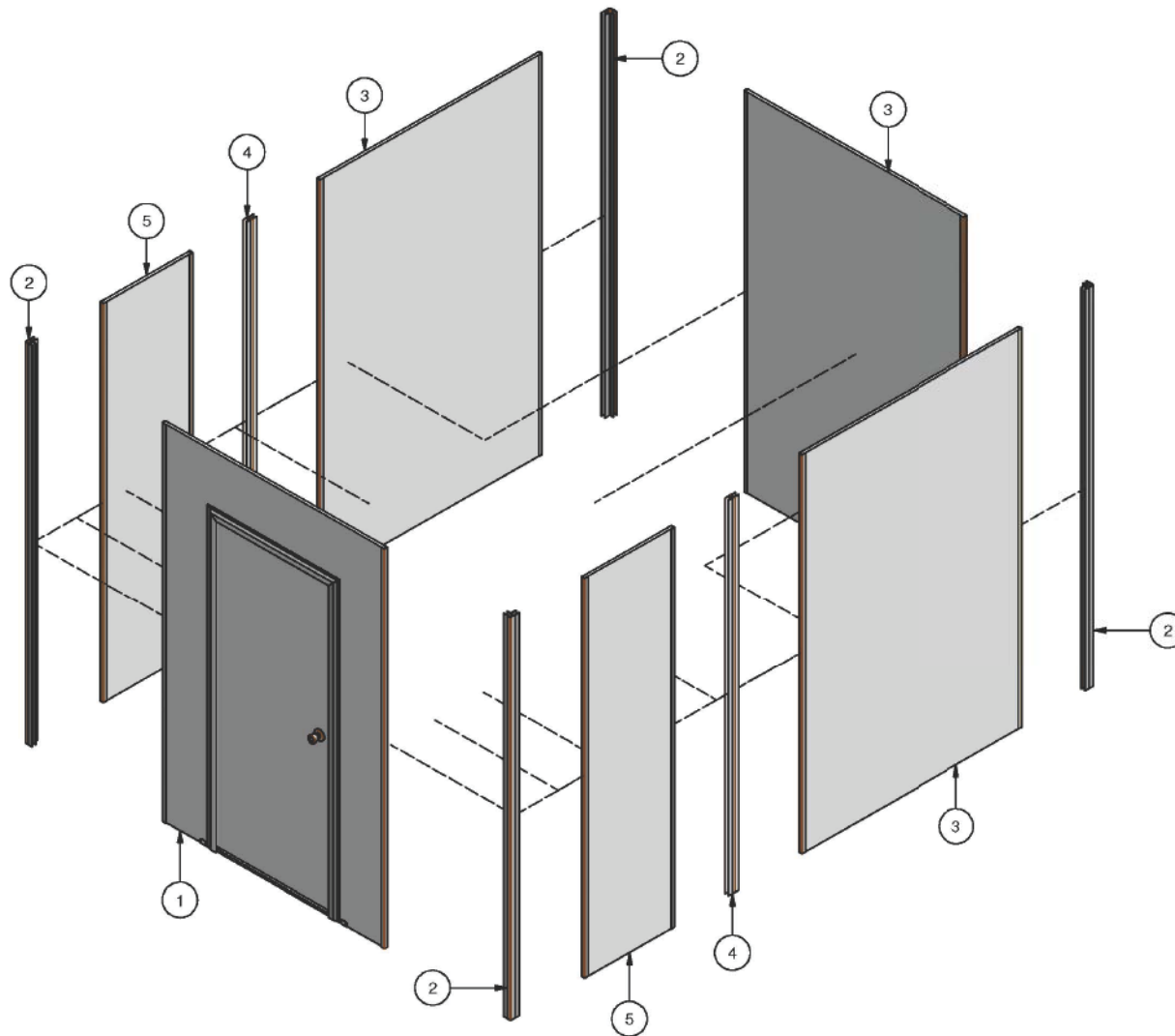


FRONT VIEW



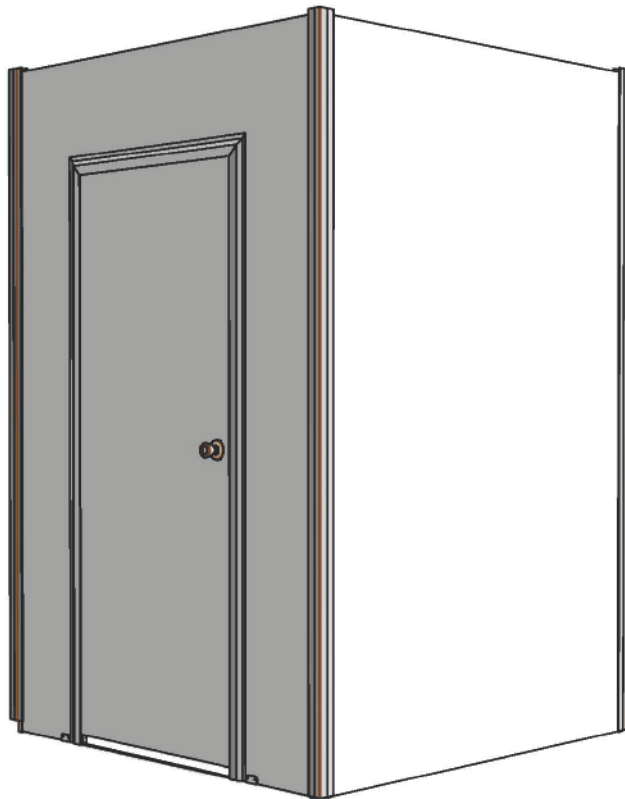
SIDE VIEW





ITEM	QTY	PART NUMBER	DESCRIPTION
1	1	Door Panel 60"	Single Door H 96"xW60"x D 0.75"
2	4	2005	CornerForm, 3/4 in, Sharp 90, 8 ft.
3	3	Solis Panel 5'	60"W x 95-1/2 " H
4	2	2598	CornerForm, 3/4 in, 180 degree, 94-9/16 H.
5	2	Solid Panel 2'	24"W x 95-1/2 " H





## 5'x5' FITTING ROOM

3 PANELS - ADDER

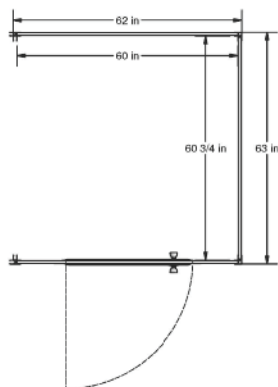
### STANDARD COLORS AVAILABLE:

- Gray panels with satin door moldings and lock
- Hard rock maple with satin door moldings and lock

### ACCESSORIES AVAILABLE:

- Corner Bench
- Shelf w/hooks

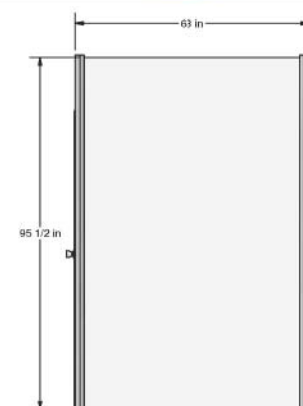
TOP VIEW

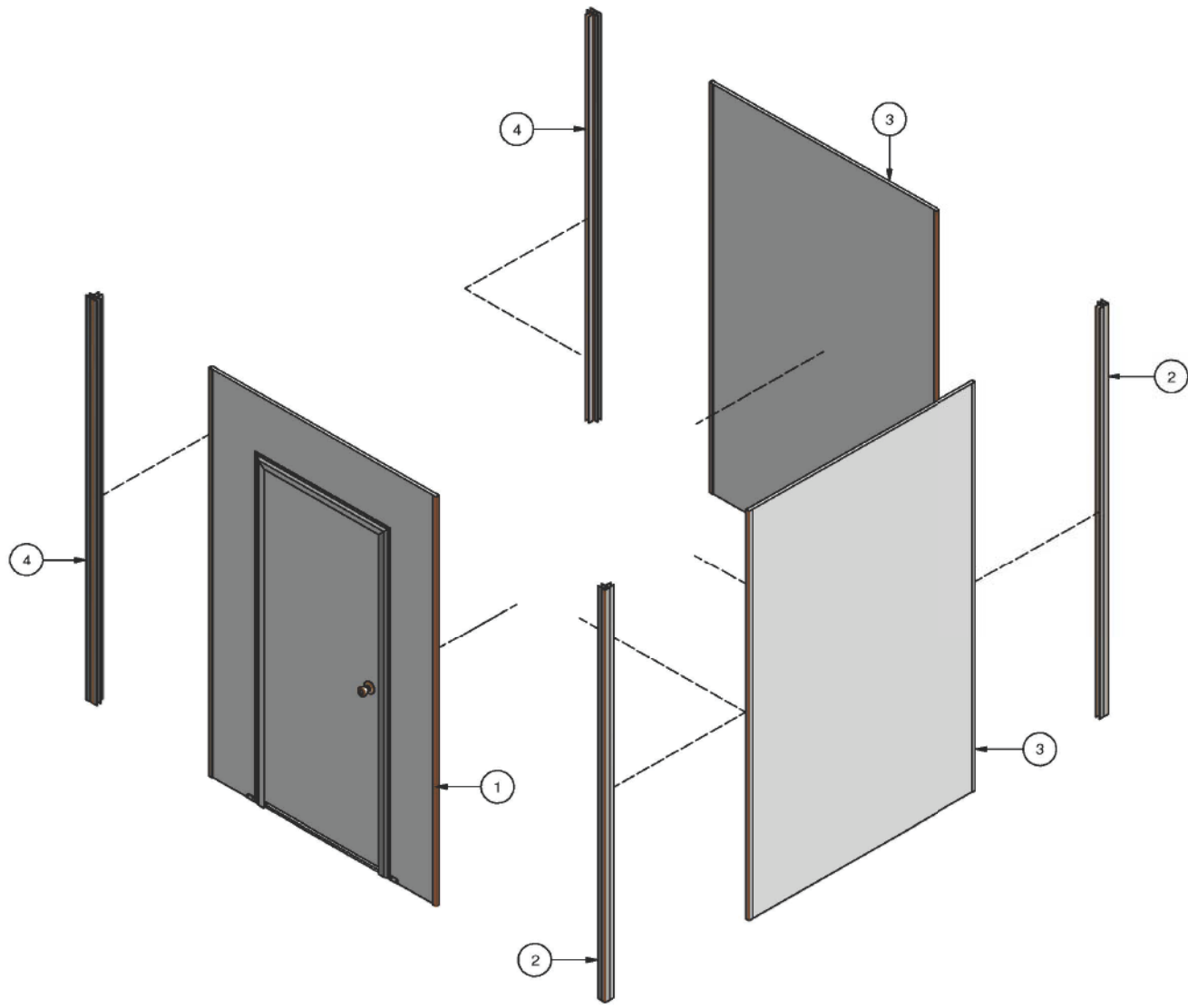


FRONT VIEW



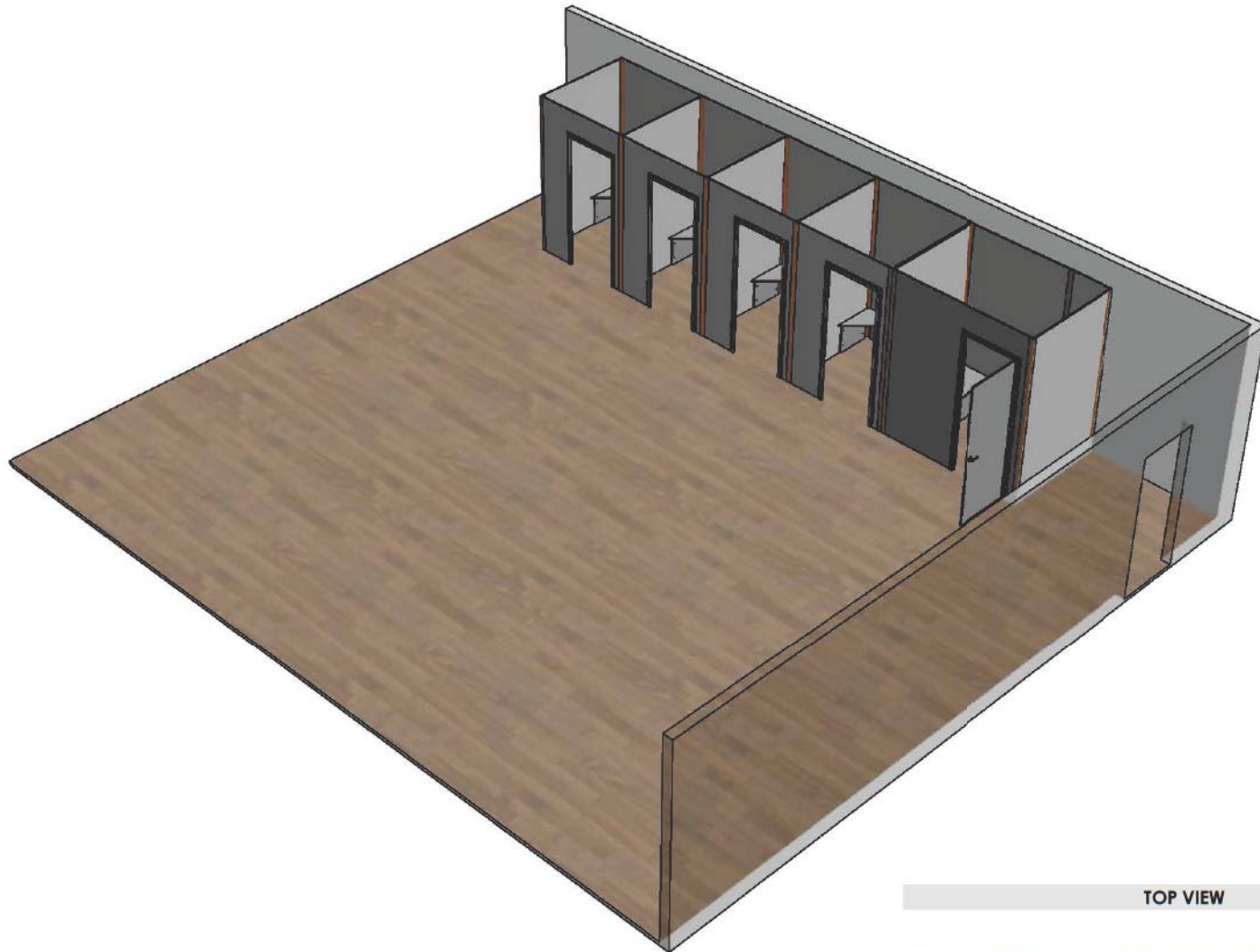
SIDE VIEW





ITEM	QTY	PART NUMBER	DESCRIPTION
1	1	Door Panel 60"	Single Door H 96"xW60"x D 0.75"
2	2	2005	CornerForm, 3/4 in, Sharp 90, 8 ft.
3	2	Solis Panel 5'	60"W x 95-1/2 " H
4	2	2700	CornerForm, 3/4 in, T-connector, 94-9/16" H.

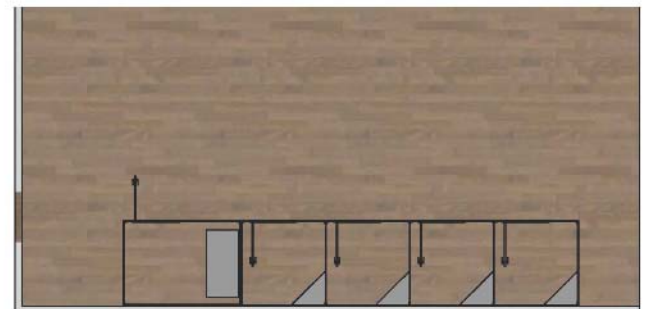
# SAMPLE CONFIGURATIONS

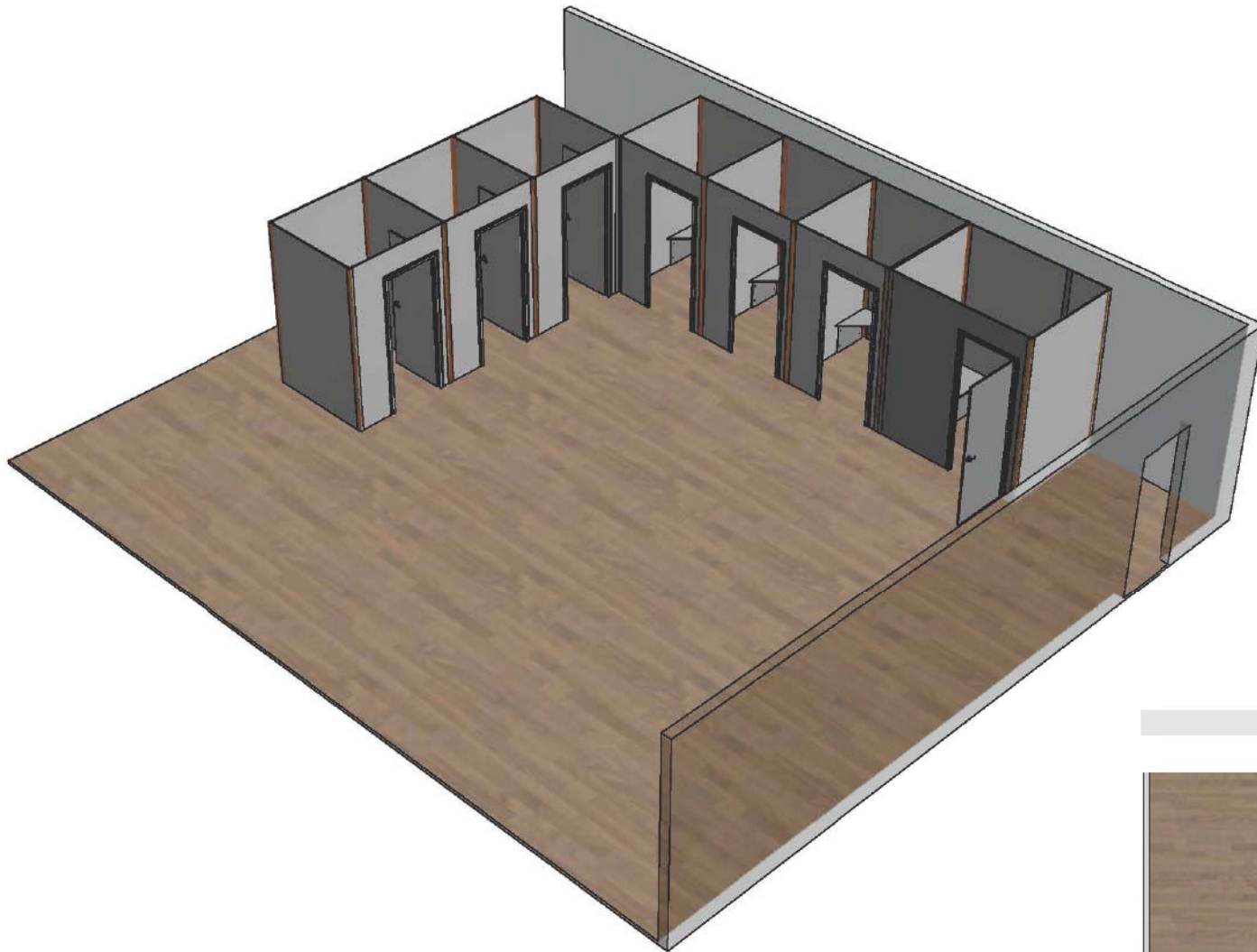


## **IN-LINE AGAINST THE WALL:**

- Can be set-up individually or in a series
- Save space and add extra stability

TOP VIEW

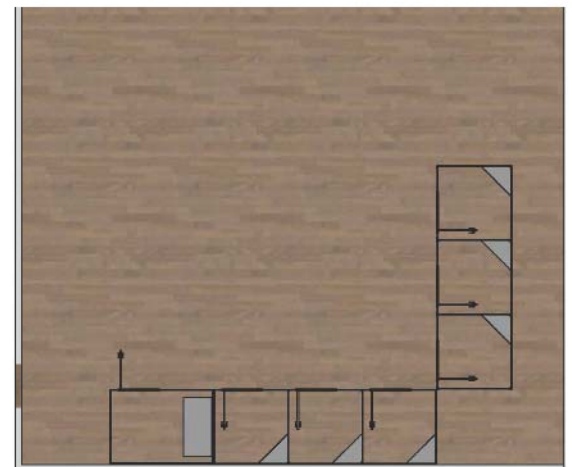


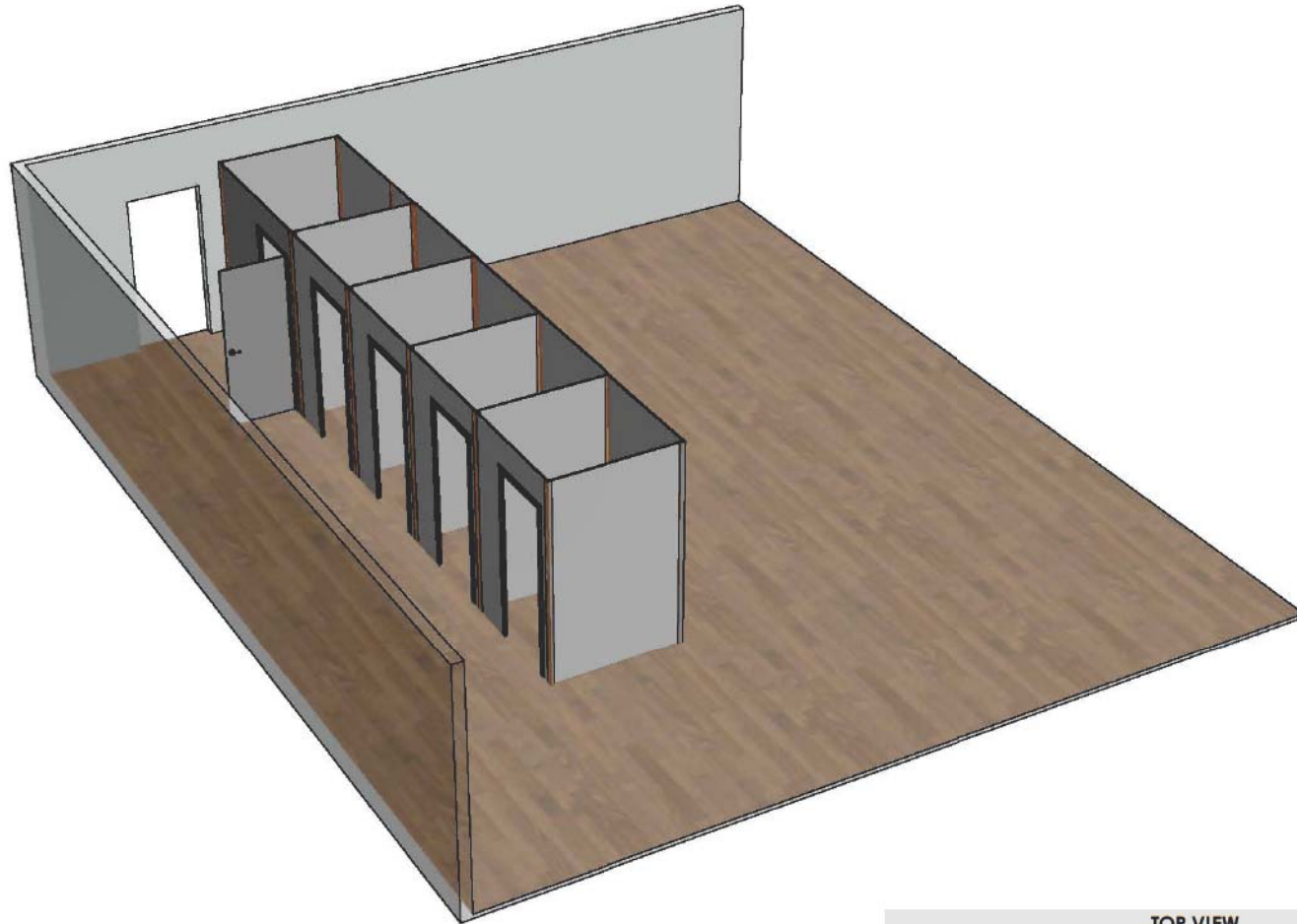


## L-SHAPE AGAINST THE WALL:

- Adjust to your room space
- Define area and add extra stability

TOP VIEW

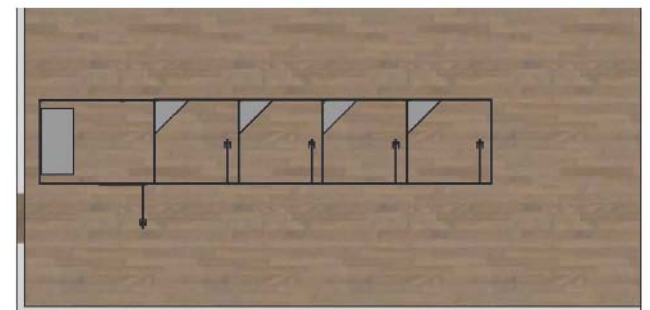


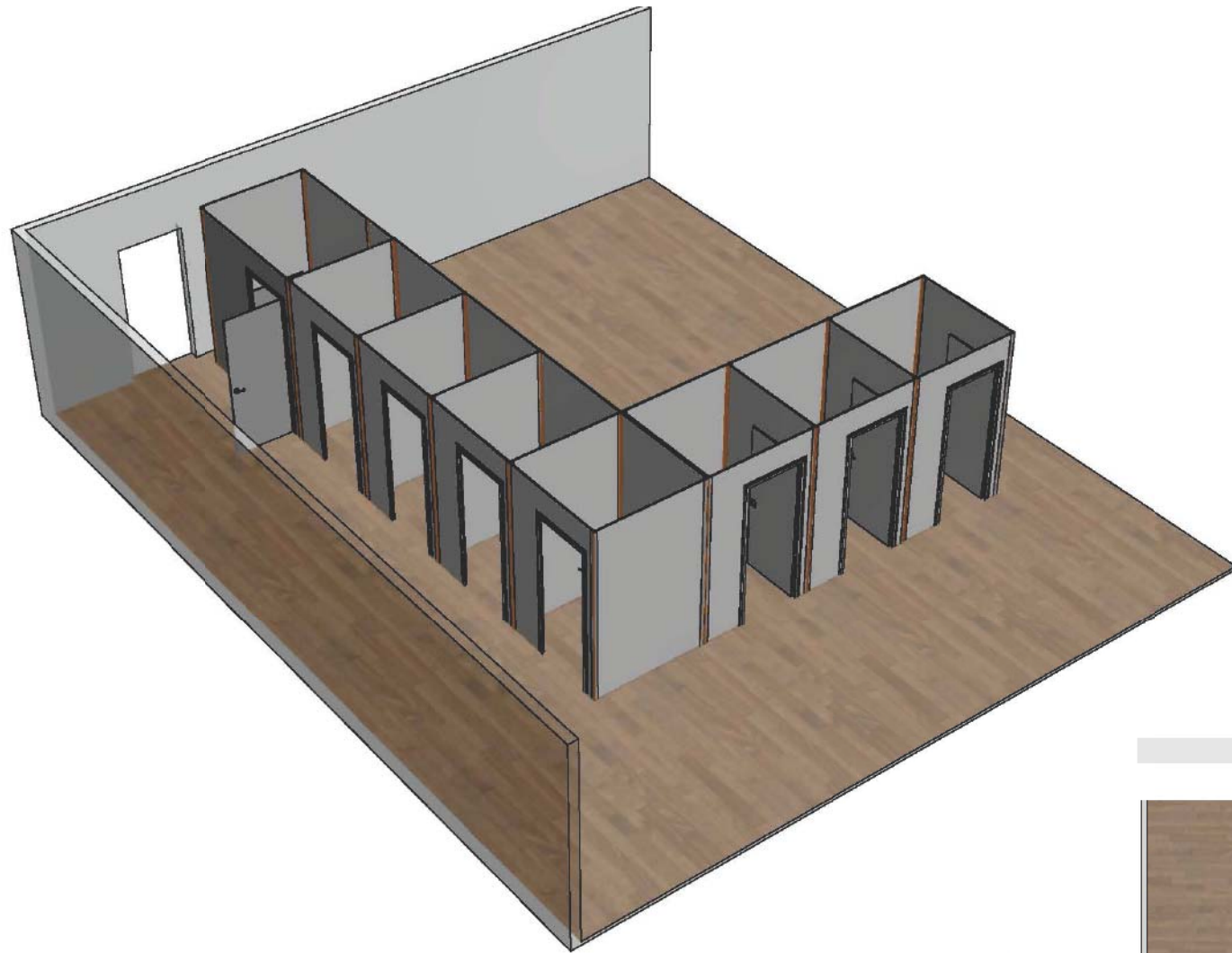


## IN-LINE OFF THE WALL:

- Can be set-up individually or in a series
- Create hallway and add privacy
- Use back of the fitting rooms for merchandising

TOP VIEW

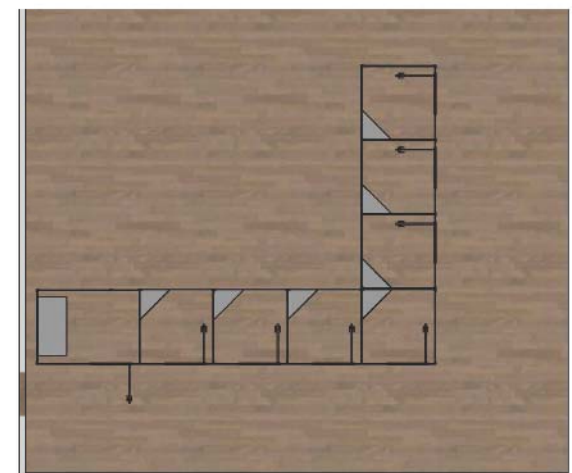




## L-SHAPE OFF THE WALL:

- Can be set-up individually or in a series
- Create hallway and add privacy
- Use back of the fitting rooms for merchandising

TOP VIEW



# I M A G E   G A L L E R Y







W A L L S  F O R M S | RETAIL DISPLAY SOLUTIONS

Questions? ... Need More Information? ... Contact Us Today!

---

[info@wallsforms.com](mailto:info@wallsforms.com) | 972-745-0800 | [www.wallsforms.com](http://www.wallsforms.com)

204 Airline Drive | Suite 200 | Coppell TX 75019